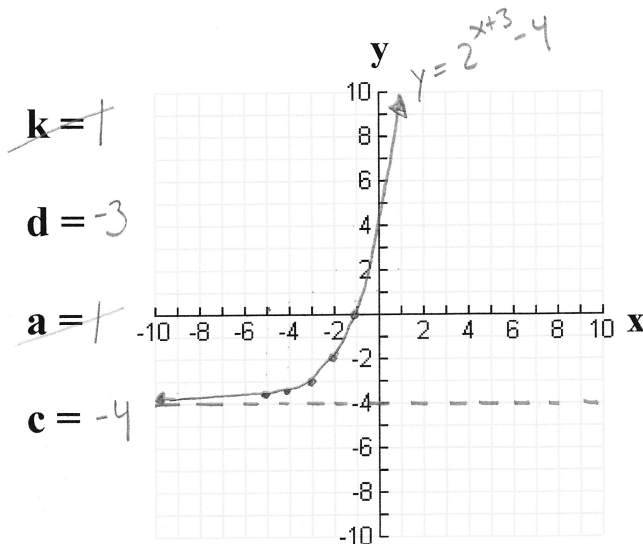


Homework: Transformations of Exponential Functions

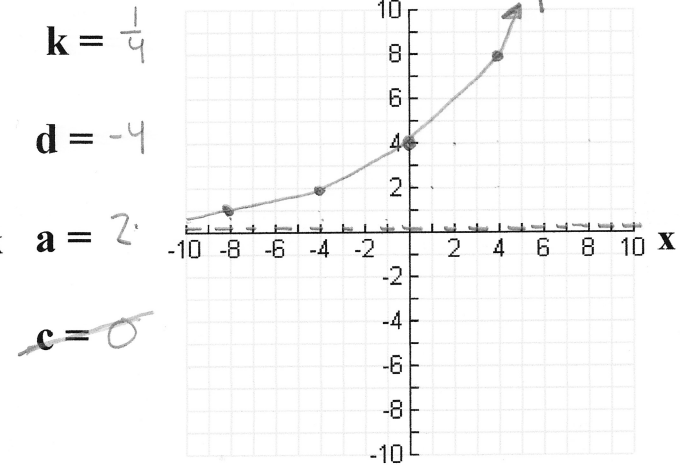
Graph the following relations using the parent function $y = 2^x$ and the table of values below:

x	$y=2^x$
-2	0.25
-1	0.5
0	1
1	2
2	4

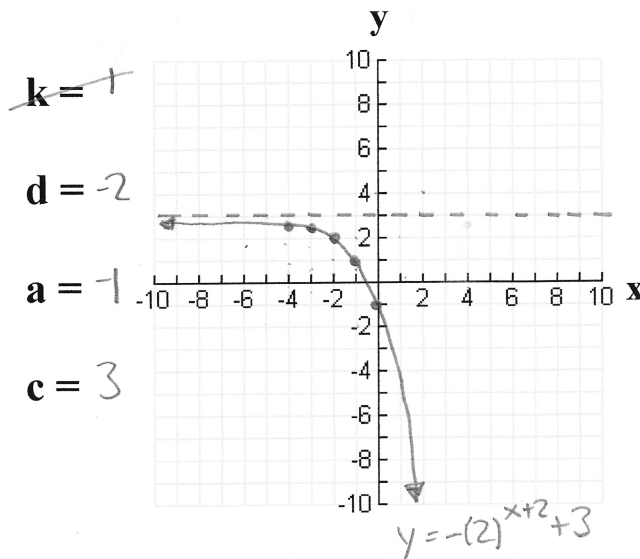
a) $y = (2)^{x+3} - 4$



b) $y = 2(2)^{\frac{1}{4}x+1}$
 $y = 2(2)^{\frac{1}{4}(x+4)}$



a) $y = -(2)^{x+2} + 3$



b) $y = 2^{-x-3} + 1$

